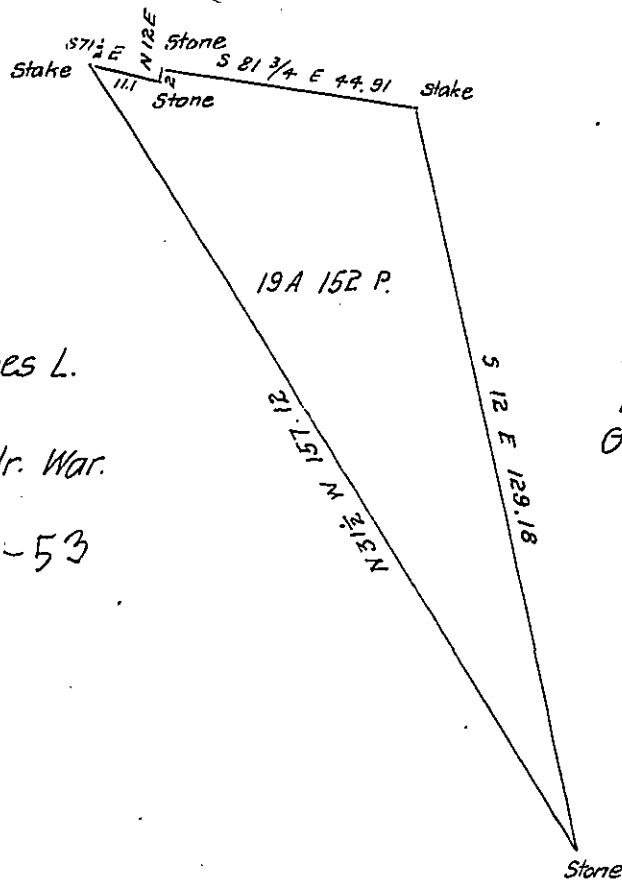


Johnetta Coal Co.
Vacant

218
H76-100

(9)



Eliza Luse, James L.
Luse et al.
Geo. Teagarden Jr. War.

A 54-53

Eliza Luse, James L.
Luse, et al.
Geo. Teagarden War.

A 54-54

A Draft of a tract of land situated in the Township of
Jefferson and County of Greene containing nineteen acres 152 perches
and allowance of six per cent for roads etc. Surveyed the 28th day of
Dec. 1901 in pursuance of a warrant granted to Eliza, James L and
Vest Mathews Guardian of H.W. Luse
Eva Luse and 1, dated the 17-day of December 1901

T. B. Dinsmore

County Surveyor

To James W. Latta Esq.

Secretary of Internal Affairs.

IN TESTIMONY that the above is a copy of the original remaining on file in
the Department of Internal Affairs of Pennsylvania, made
conformably to an Act of Assembly approved the 16th day of
February, 1833, I have hereunto set my Hand and caused
the Seal of said Department to be affixed at Harrisburg,
this fifteenth day of November 1905

James W. Latta
Secretary of Internal Affairs.